



**REGIONAL SPECIALISED METEOROLOGICAL CENTRE-TROPICAL CYCLONES, NEW DELHI
TROPICAL WEATHER OUTLOOK**

DEMS-RSMC TROPICAL CYCLONES NEW DELHI DATED 03.11.2021

TROPICAL WEATHER OUTLOOK FOR NORTH INDIAN OCEAN (THE BAY OF BENGAL OF BENGAL OF BENGAL AND ARABIAN SEA) VALID FOR NEXT 120 HOURS ISSUED AT 0600 UTC OF 03.11.2021 BASED ON 0300 UTC OF 03.11.2021.

BAY OF BENGAL:

YESTERDAY'S LOW PRESSURE AREA OVER COMORIN AREA AND NEIGHBOURHOOD MOVED WESTWARDS AND EMERGED INTO THE ARABIAN SEA AT 0300 UTC OF TODAY, THE 3RD NOVEMBER, 2021.

AS PER SATELLITE IMAGERY AT 0300 UTC, LOW PRESSURE AREA LAY OVER COMORIN AREA & NEIGHBOURHOOD. ASSOCIATED SCATTERED TO BROKEN LOW AND MEDIUM CLOUDS WITH EMBEDDED MODERATE TO INTENSE CONVECTION LAY OVER COMORIN & NEIGHBOURHOOD.

SCATTERED LOW AND MEDIUM CLOUDS WITH EMBEDDED INTENSE TO VERY INTENSE CONVECTION LAY OVER CENTRAL, SOUTHWEST BAY OF BENGAL AND SOUTH ANDAMAN SEA. SCATTERED LOW AND MEDIUM CLOUDS WITH EMBEDDED MODERATE TO INTENSE CONVECTION LAY OVER REST OF BAY OF BENGAL & NORTH ANDAMAN SEA.

PROBABILITY OF CYCLOGENESIS (FORMATION OF DEPRESSION) DURING NEXT 120 HRS:

24 HOURS	24-48 HOURS	48-72 HOURS	72-96 HOURS	96-120 HOURS
NIL	NIL	NIL	NIL	NIL

ARABIAN SEA:

THE LOW PRESSURE AREA, WHICH EMERGED INTO THE ARABIAN SEA FROM COMORIN AREA LAY OVER LAKSHADWEEP AREA & ADJOINING SOUTHEAST ARABIAN SEA AT 0300 UTC OF TODAY, THE 3RD NOVEMBER, 2021. ASSOCIATED CYCLONIC CIRCULATION EXTENDS UPTO 4.5 KM ABOVE MEAN SEA LEVEL. IT IS LIKELY TO MOVE NORTH-NORTHWESTWARDS AND BECOME MORE MARKED DURING NEXT 3 DAYS.

SCATTERED LOW AND MEDIUM CLOUDS WITH EMBEDDED INTENSE TO VERY INTENSE CONVECTION LAY OVER EASTCENTRAL ADJOINING SOUTHEAST ARABIAN SEA AND MODERATE TO INTENSE CONVECTION LAY OVER COMORIN REGION.

PROBABILITY OF CYCLOGENESIS (FORMATION OF DEPRESSION) DURING NEXT 120 HRS:

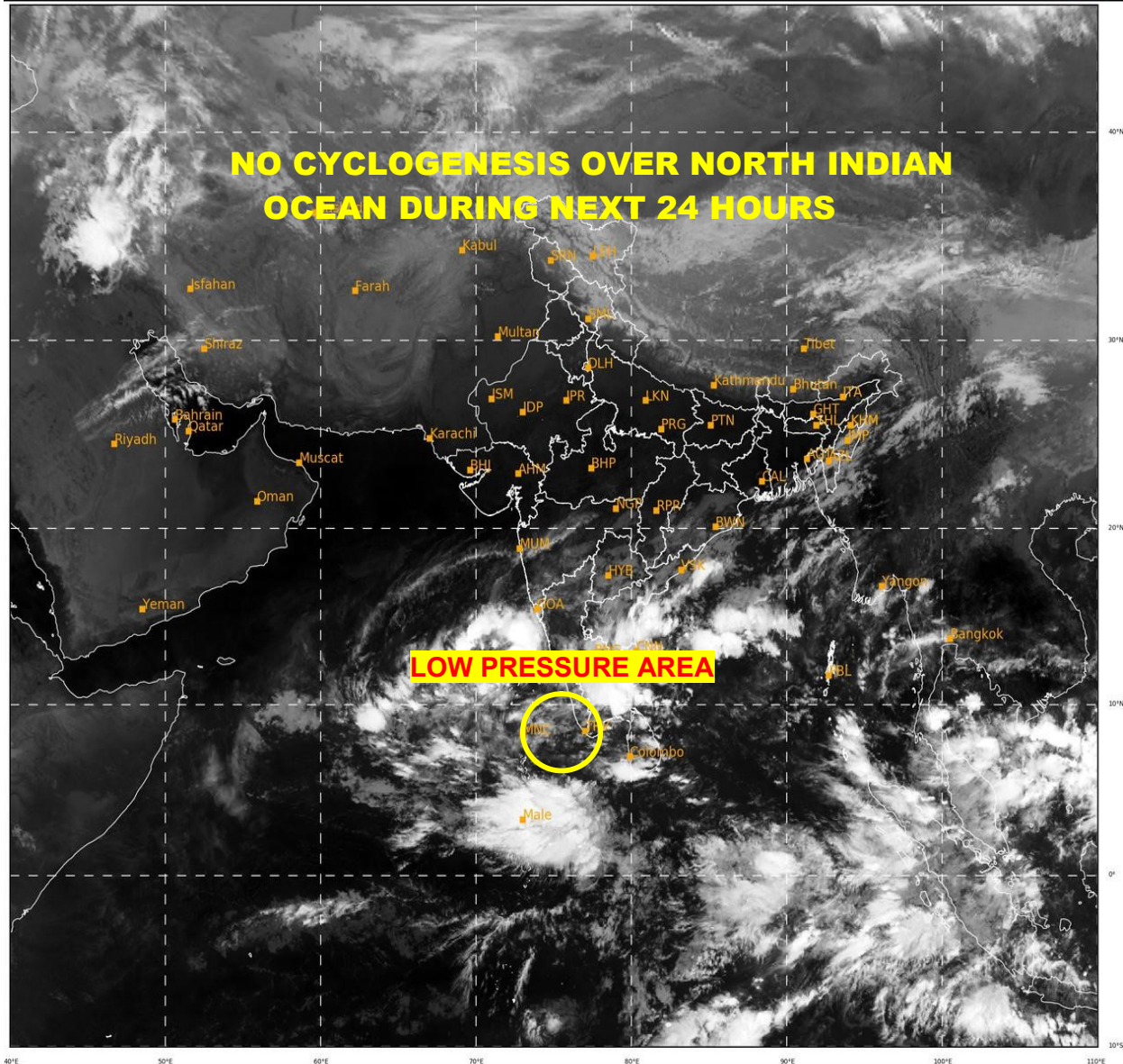
24 HOURS	24-48 HOURS	48-72 HOURS	72-96 HOURS	96-120 HOURS
NIL	NIL	NIL	NIL	LOW

REMARKS: THE CONVECTIVELY ACTIVE PHASE OF MADDEN JULIAN OSCILLATION IS CURRENTLY IN PHASE 2, WITH AMPLITUDE LESS THAN 1. IT IS LIKELY TO PROPAGATE FURTHER EASTWARDS & MOVE ACROSS PHASE 3 AND REACH PHASE 4 ON 5TH NOVEMBER

WITH AMPLITUDE REMAINING LESS THAN 1. IT WILL CONTINUE IN PHASE 4 FOR SUBSEQUENT 3 DAYS. HENCE MJO WILL SUPPORT ENHANCEMENT OF CONVECTIVE ACTIVITY OVER THE NORTH INDIAN OCEAN DURING THE FORECAST PERIOD. THE SEA SURFACE TEMPERATURE (28-29°C) AND OCEAN THERMAL ENERGY OVER SOUTHEAST & EAST-CENTRAL AS ARE FAVOURABLE TO SUPPORT CONVECTION. VERTICAL WIND SHEAR IS LOW TO MODERATE OVER SOUTHEAST & ADJOINING EAST-CENTRAL AS. THERE ARE 2 DISTINCT REGIONS OF VERTICALLY COUPLED LOW LEVEL CONVERGENCE & UPPER LEVEL DIVERGENCE MAXIMA, ONE LOCATED OVER MALDIVES – COMORIN AREA AND THE OTHER OVER SOUTHEAST AS TO THE NORTHWEST OF LAKSHADWEEP AREA. THE UPPER TROPOSPHERIC RIDGE PASSES ROUGHLY ALONG LAT. 15°N OVER THE AS. A FEW OF THE NUMERICAL MODELS, ESPECIALLY NCMV ARE SHOWING LIKELY NORTH-NORTHWESTWARD MOVEMENT & INTENSIFICATION OF THE CURRENT LOW PRESSURE AREA.

SAT : INSAT-3D IMG
 IMG_TIR1 10.8 um
 LIC Mercator

03-11-2021/(0300 to 0326) GMT
 03-11-2021/(0830 to 0856) IST



520

942

IMD, DELHI

PROBABILITY OF CYCLOGENESIS (FORMATION OF DEPRESSION): NIL: 0%, LOW: 1-25%, FAIR: 26-50%, MODERATE: 51-75% AND HIGH: 76-100%
 This is a guidance Bulletin for the WMO/ESCAP Panel Member countries., Please visit respective National websites for Country specific Bulletins